

# SDIRC GRADUATION RATES 2017-2018

## **Federal Reporting Regulations**

Starting with the 2011-12 school year, the state changed how they calculate graduation rates using the stricter federal reporting requirements. These regulations require each state to calculate a four-year adjusted cohort graduation rate, which includes standard diplomas but excludes GED. The US Department of Education (USED) adopted this calculation method in an effort to develop uniform, accurate and comparable graduation rates across all states. This graduation rate is currently used in Florida's school accountability system in the high school grades calculation.

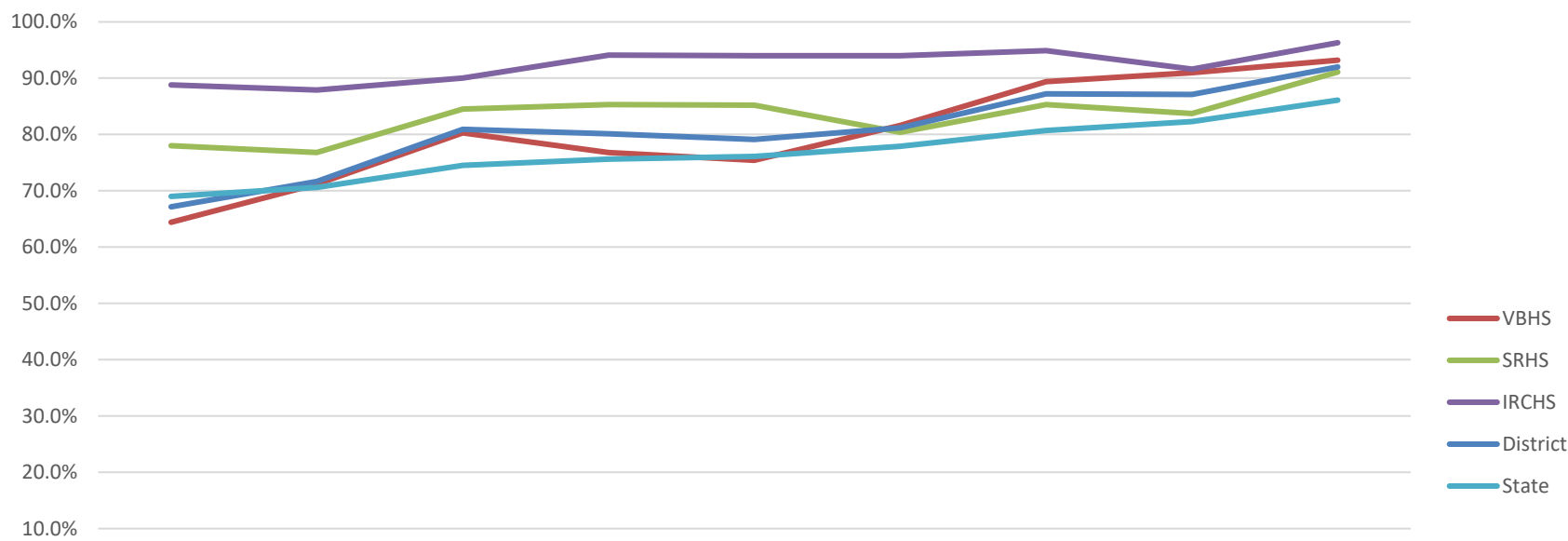
## **Graduation Rate**

Florida's graduation rate is a cohort graduation rate. A cohort is defined as a group of students on the same schedule to graduate. The graduation rate measures the percentage of students who graduate within four years of their first-time enrollment in ninth grade. Subsequent to their enrollment in ninth grade, students who transfer out and deceased students are removed from the calculation. Entering transfer students are included in the graduation rate for the class with which they are scheduled to graduate, based on their date of enrollment.

## **Attached Charts**

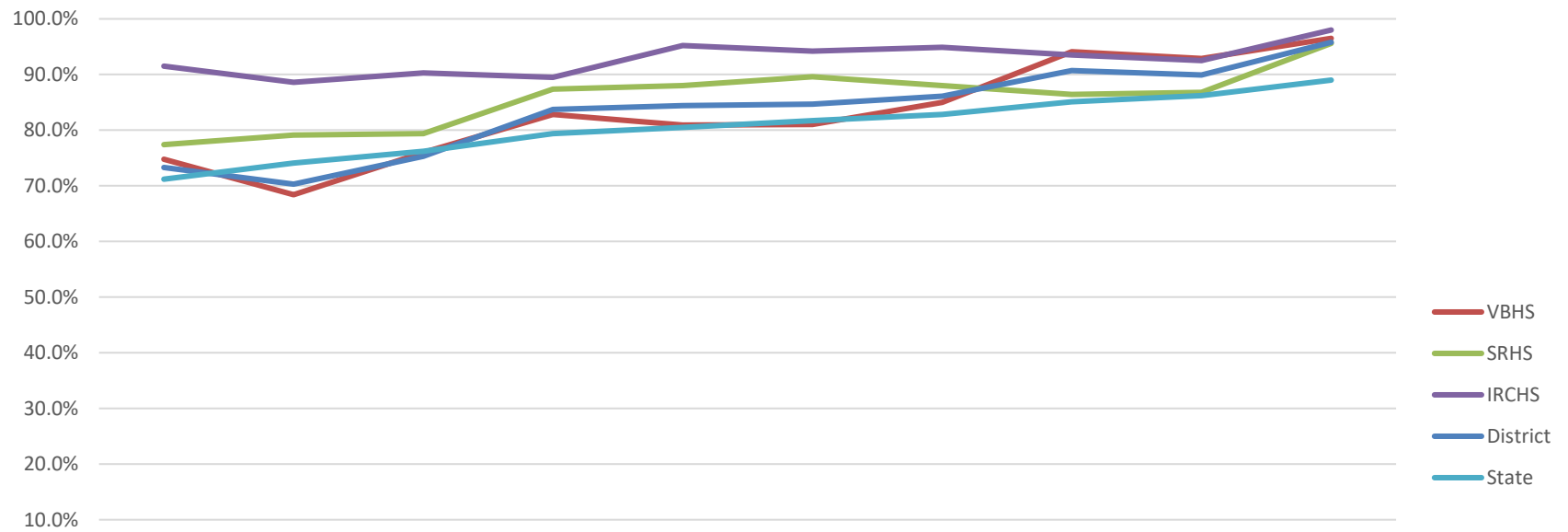
Following this narrative are several charts that display the School District of Indian River County's historical graduation rates broken down by school and reporting subgroup. Beginning with the 2010-11 school year, Florida implemented new data elements for collecting and reporting student demographic data in compliance with changes made by the U.S. Office of Management and Budget. For race, students select one or more of the following: American Indian or Alaska Native, Asian, Black or African American, Native Hawaiian or Other Pacific Islander, White. Students who select more than one racial category, but do not indicate that they are Hispanic or Latino, are included in the Two or More Races category in this report. All students who indicated that they are Hispanic or Latino are included only in the Hispanic/Latino rates in this report; they are not included in the racial categories they have selected. The graduation rates of schools and/or districts with fewer than 10 students in a subgroup are not reported.

Graduation Rates by Subgroup, 2008-09 Through 2017-18  
All Students



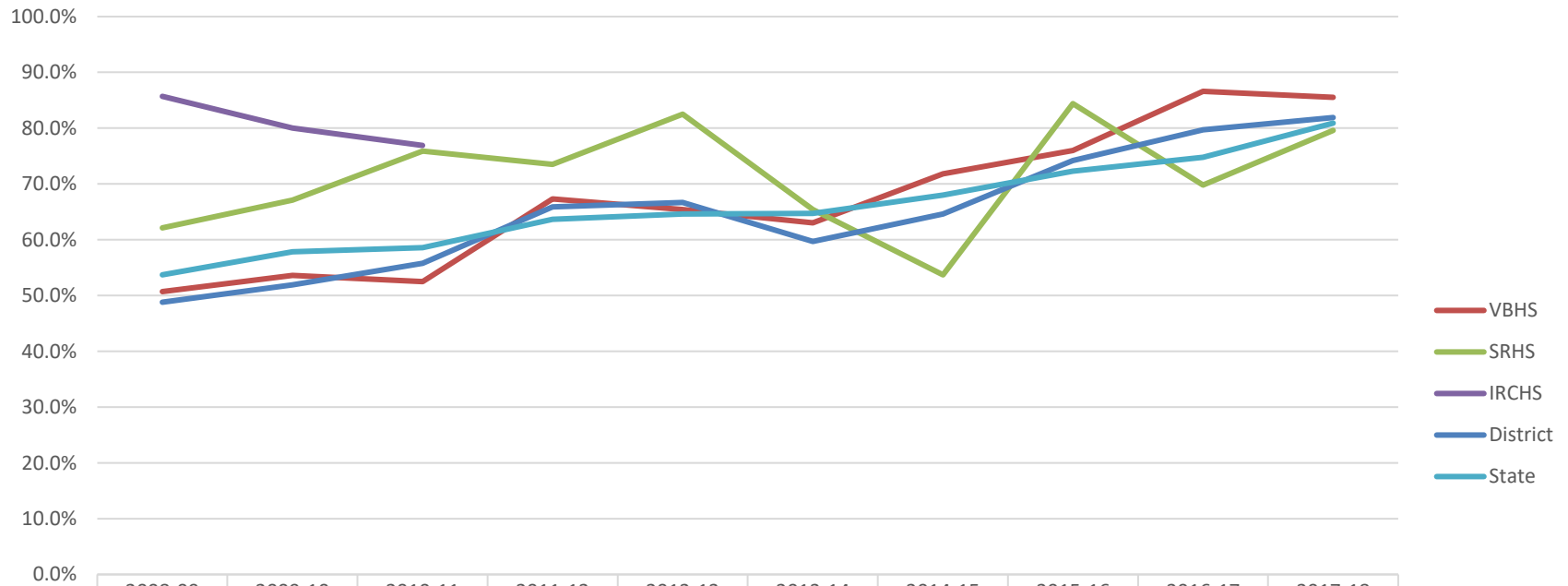
	2009-10	2010-11	2011-12	2012-13	2013-14	2014-15	2015-16	2016-17	2017-18
VBHS	64.4%	71.2%	80.3%	76.8%	75.4%	81.6%	89.4%	91.0%	93.2%
SRHS	78.0%	76.8%	84.5%	85.3%	85.2%	80.4%	85.3%	83.7%	91.1%
IRCHS	88.8%	87.9%	90.0%	94.1%	94.0%	94.0%	94.9%	91.6%	96.3%
District	67.2%	71.7%	80.9%	80.1%	79.1%	81.2%	87.2%	87.1%	92.0%
State	69.0%	70.6%	74.5%	75.6%	76.1%	77.9%	80.7%	82.3%	86.1%

Graduation Rates by Subgroup, 2008-09 Through 2017-18  
White Students



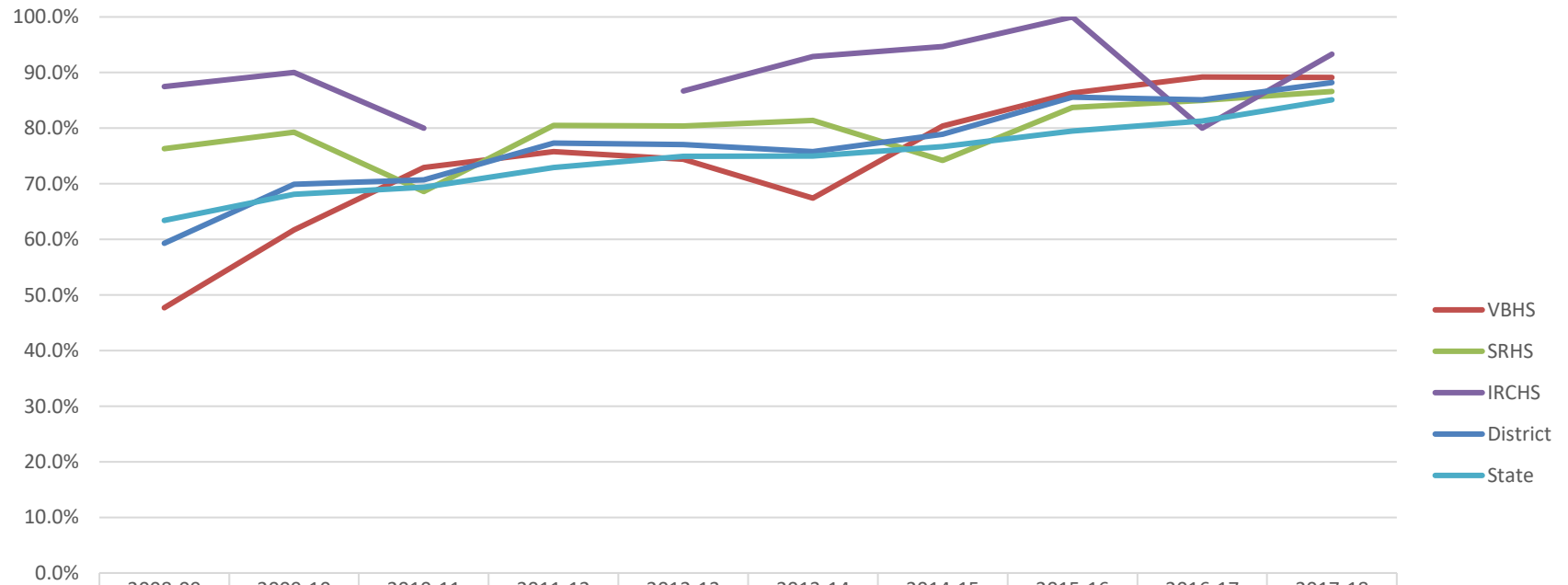
	2008-09	2009-10	2010-11	2011-12	2012-13	2013-14	2014-15	2015-16	2016-17	2017-18
VBHS	74.8%	68.4%	76.0%	82.8%	80.9%	81.0%	85.0%	94.1%	92.9%	96.5%
SRHS	77.4%	79.1%	79.4%	87.4%	88.0%	89.6%	88.0%	86.4%	86.8%	95.6%
IRCHS	91.5%	88.6%	90.3%	89.5%	95.2%	94.2%	94.9%	93.5%	92.5%	98.0%
District	73.3%	70.3%	75.3%	83.7%	84.4%	84.7%	86.1%	90.7%	89.9%	95.8%
State	71.2%	74.1%	76.2%	79.4%	80.5%	81.7%	82.8%	85.1%	86.2%	89.0%

Graduation Rates by Subgroup, 2008-09 Through 2017-18  
Black Students



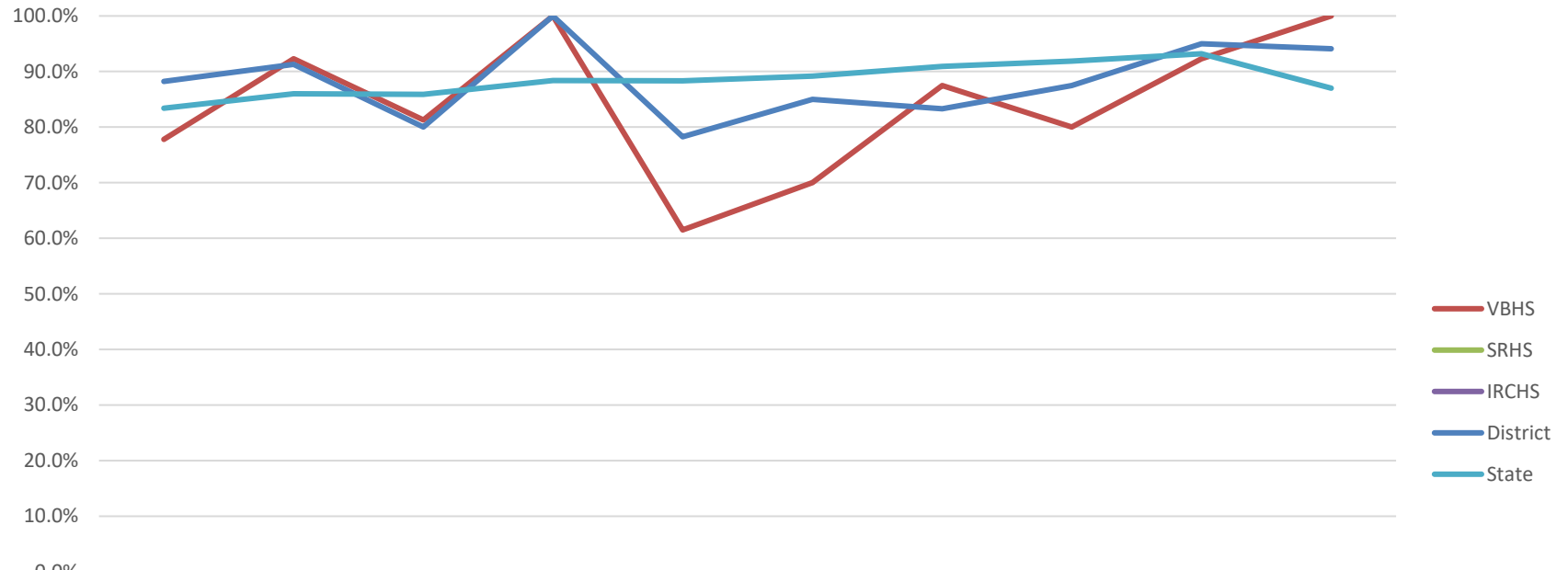
	2008-09	2009-10	2010-11	2011-12	2012-13	2013-14	2014-15	2015-16	2016-17	2017-18
VBHS	50.7%	53.6%	52.5%	67.3%	65.4%	63.0%	71.8%	76.0%	86.6%	85.5%
SRHS	62.1%	67.1%	75.9%	73.5%	82.5%	65.4%	53.7%	84.4%	69.8%	79.6%
IRCHS	85.7%	80.0%	76.9%							100.0%
District	48.8%	51.9%	55.8%	65.9%	66.7%	59.7%	64.6%	74.2%	79.7%	81.9%
State	53.7%	57.9%	58.6%	63.7%	64.6%	64.7%	68.0%	72.3%	74.8%	80.9%

Graduation Rates by Subgroup, 2008-09 Through 2017-18  
Hispanic Students



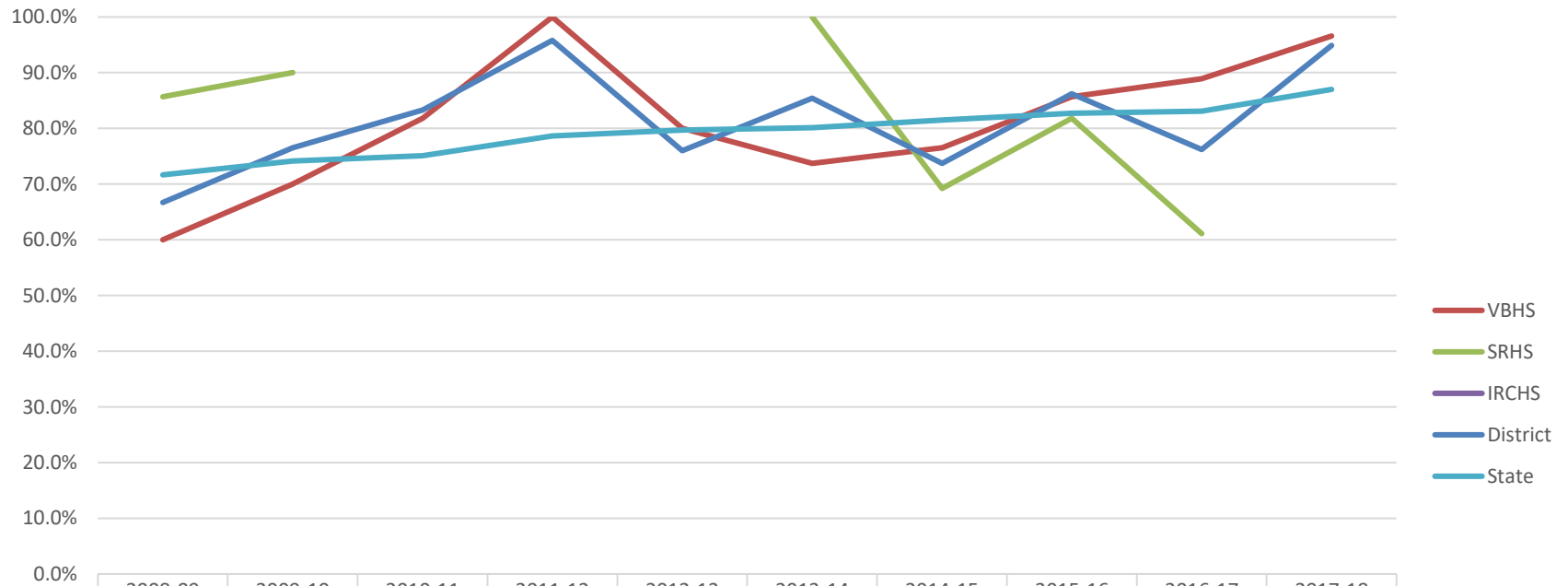
	2008-09	2009-10	2010-11	2011-12	2012-13	2013-14	2014-15	2015-16	2016-17	2017-18
VBHS	47.7%	61.7%	72.9%	75.8%	74.4%	67.4%	80.4%	86.3%	89.2%	89.1%
SRHS	76.3%	79.3%	68.6%	80.5%	80.4%	81.4%	74.2%	83.7%	85.0%	86.6%
IRCHS	87.5%	90.0%	80.0%		86.7%	92.9%	94.7%	100.0%	80.0%	93.3%
District	59.3%	69.9%	70.7%	77.3%	77.1%	75.8%	78.9%	85.6%	85.1%	88.2%
State	63.4%	68.1%	69.4%	72.9%	74.9%	75.0%	76.7%	79.5%	81.3%	85.1%

Graduation Rates by Subgroup, 2008-09 Through 2017-18  
Asian Students



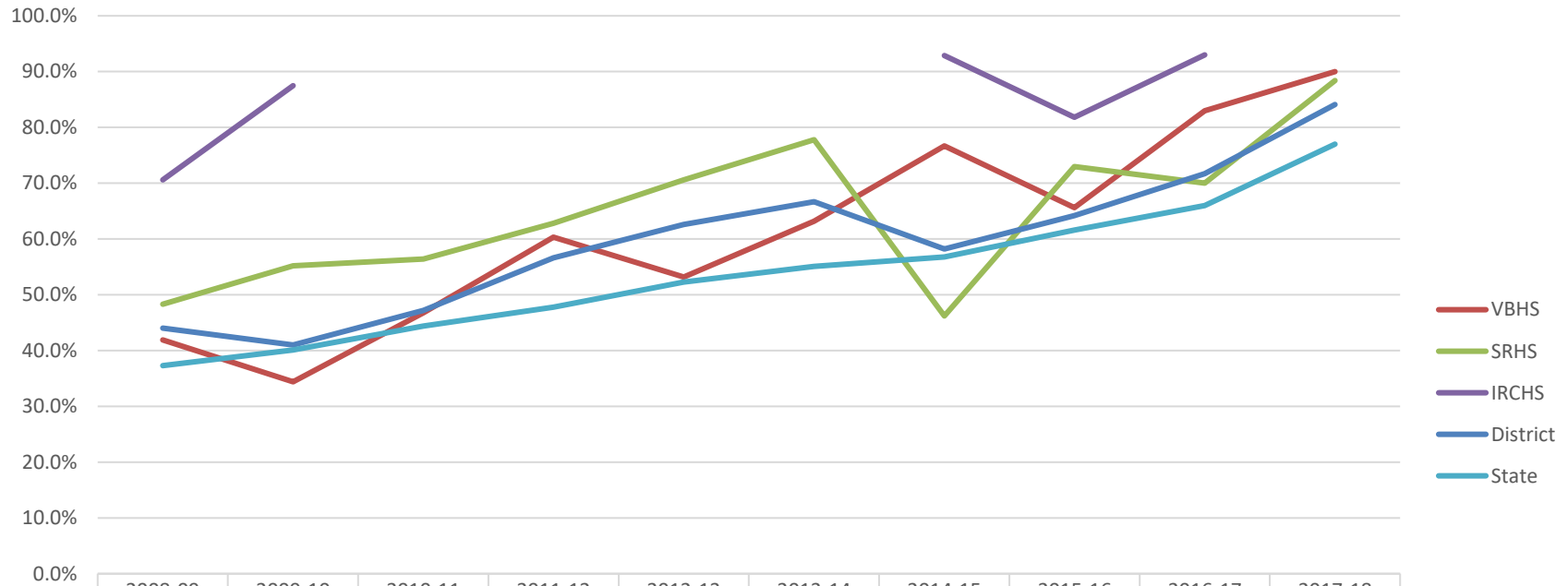
	2008-09	2009-10	2010-11	2011-12	2012-13	2013-14	2014-15	2015-16	2016-17	2017-18
VBHS	77.8%	92.3%	81.3%	100.0%	61.5%	70.0%	87.5%	80.0%	92.3%	100.0%
SRHS	100.0%									
IRCHS	100.0%									
District	88.2%	91.3%	80.0%	100.0%	78.3%	85.0%	83.3%	87.5%	95.0%	94.1%
State	83.4%	86.0%	85.9%	88.4%	88.4%	89.2%	90.9%	91.9%	93.2%	87.0%

Graduation Rates by Subgroup, 2008-09 Through 2017-18  
Multiracial Students



	2008-09	2009-10	2010-11	2011-12	2012-13	2013-14	2014-15	2015-16	2016-17	2017-18
VBHS	60.0%	70.0%	81.8%	100.0%	80.0%	73.7%	76.5%	85.7%	88.9%	96.6%
SRHS	85.7%	90.0%				100.0%	69.2%	81.8%	61.1%	
IRCHS	80.0%									
District	66.7%	76.5%	83.3%	95.8%	76.0%	85.4%	73.7%	86.2%	76.2%	94.9%
State	71.7%	74.2%	75.1%	78.6%	79.7%	80.1%	81.5%	82.7%	83.1%	87.0%

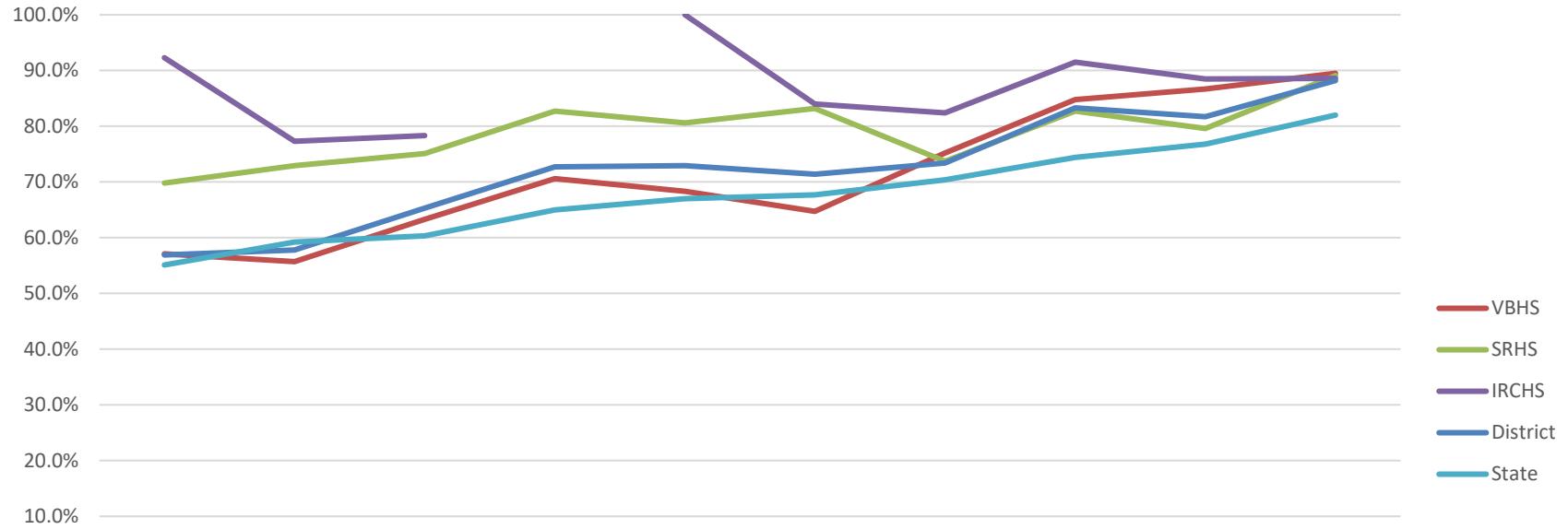
Graduation Rates by Subgroup, 2008-09 Through 2017-18  
Students with Disabilities



	2008-09	2009-10	2010-11	2011-12	2012-13	2013-14	2014-15	2015-16	2016-17	2017-18
VBHS	41.9%	34.4%	46.8%	60.3%	53.2%	63.2%	76.7%	65.6%	83.0%	90.0%
SRHS	48.3%	55.2%	56.4%	62.8%	70.6%	77.8%	46.2%	73.0%	70.0%	88.4%
IRCHS	70.6%	87.5%			92.3%		92.9%	81.8%	93.0%	
District	44.0%	41.0%	47.2%	56.6%	62.6%	66.7%	58.2%	64.2%	71.7%	84.1%
State	37.3%	40.1%	44.4%	47.8%	52.3%	55.1%	56.8%	61.6%	66.0%	77.0%

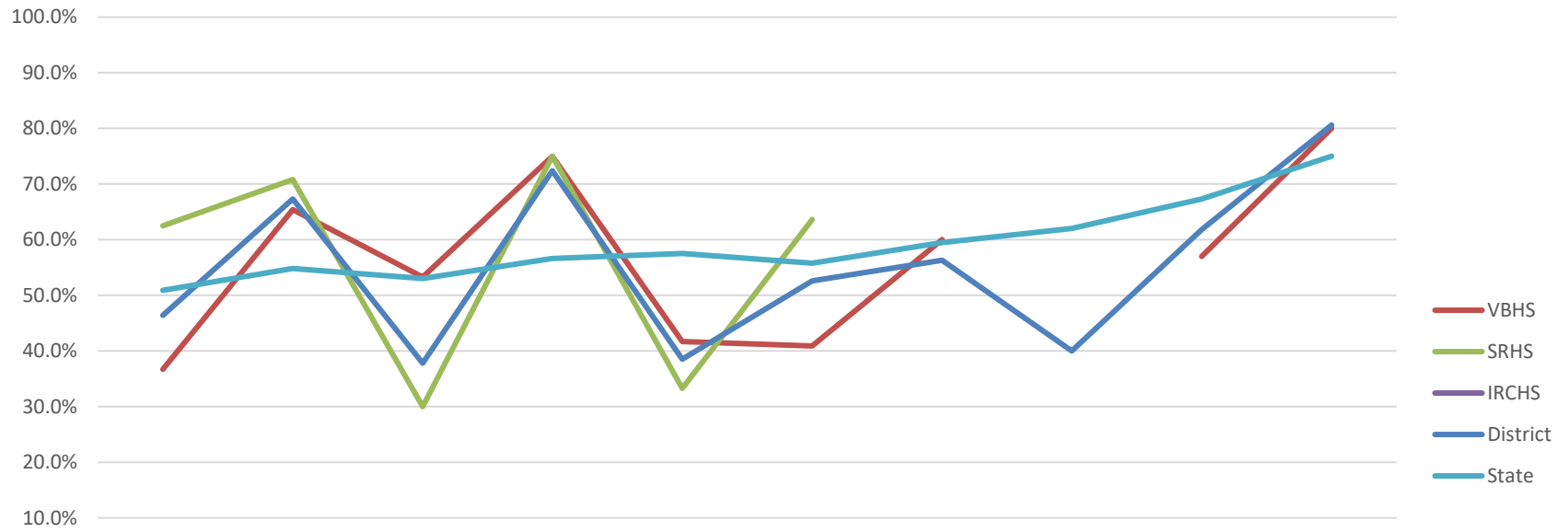


Graduation Rates by Subgroup, 2008-09 Through 2017-18  
Economically Disadvantaged Students



	2008-09	2009-10	2010-11	2011-12	2012-13	2013-14	2014-15	2015-16	2016-17	2017-18
VBHS	57.1%	55.7%	63.3%	70.6%	68.3%	64.7%	75.2%	84.8%	86.7%	89.5%
SRHS	69.8%	72.9%	75.1%	82.7%	80.6%	83.2%	73.7%	82.7%	79.6%	89.1%
IRCHS	92.3%	77.3%	78.3%		100.0%	84.0%	82.4%	91.5%	88.5%	88.6%
District	56.9%	57.8%	65.3%	72.7%	72.9%	71.4%	73.4%	83.3%	81.7%	88.2%
State	55.1%	59.2%	60.3%	65.0%	67.0%	67.7%	70.4%	74.4%	76.8%	82.0%

Graduation Rates by Subgroup, 2008-09 Through 2017-18  
English Language Learners



	2008-09	2009-10	2010-11	2011-12	2012-13	2013-14	2014-15	2015-16	2016-17	2017-18
VBHS	36.7%	65.4%	53.3%	75.0%	41.7%	40.9%	60.0%		57.0%	80.0%
SRHS	62.5%	70.8%	30.0%	75.0%	33.3%	63.6%		50.0%		81.8%
IRCHS										
District	46.4%	67.3%	37.8%	72.4%	38.5%	52.6%	56.3%	40.0%	61.8%	80.6%
State	50.9%	54.8%	53.0%	56.6%	57.5%	55.8%	59.5%	62.0%	67.3%	75.0%