



# School District of Indian River County

## Sebastian Elementary School

400 County Road #512, Sebastian, FL 32958

<https://ses.indianriverschools.org/>

# 2020-2021 School Profile

Principal: Whitfield, Letitia

Principal Email: [letitia.whitfield@indianriverschools.org](mailto:letitia.whitfield@indianriverschools.org)

Phone: 772-978-8200

### ENROLLMENT

Student Enrollment by Grade and Ethnicity**									
GD	White, Non-Hisp.		Black, Non-Hisp.		Hispanic		Other		Total
	Ct	%	Ct	%	Ct	%	Ct	%	
KG	18	46.2%	11	28.2%	7	17.9%	3	7.7%	39
1	34	56.7%	14	23.3%	11	18.3%	1	1.7%	60
2	19	40.4%	17	36.2%	8	17.0%	3	6.4%	47
3	24	44.4%	15	27.8%	9	16.7%	6	11.1%	54
4	40	51.3%	25	32.1%	9	11.5%	4	5.1%	78
5	26	50.0%	15	28.8%	8	15.4%	3	5.8%	52

### Exceptional Student Program Information\*\*

Program	Number with Exceptionality
Exceptional Students	63
Gifted (* = <10)	*
Total	63

### 20-21 Least Restrictive Environment

96.1%

Source: Focus

### English Language Learners\*\*

Count	Percent
*	*

### ACADEMIC PERFORMANCE

School Grade	
2018-2019	2019-2020*
C	NA

### Measures of School Grade

Component	18-19	19-20*	Change
ELA	Achievement	53	→
	LG All	57	→
	LG Low 25%	49	→
Math	Achievement	58	→
	LG All	55	→
	LG Low 25%	49	→
Science Achievement	53	→	

\*Due to COVID, per the FLDOE, K-12 school grades will not be calculated for the 2019-2020 school year.

### SCHOOL CULTURE

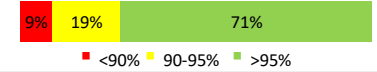
#### 19-20 Climate Surveys

Due to COVID and school closures, the end of year school climate surveys were not administered.

#### Student Attendance\*\*

% of students with an ADA below 90%, between 90-95% and above 95%.

ADA	<90%	90-95%	>95%
% of Stud	9%	19%	71%



#### Average Daily Attendance\*\*

Students

93.3%

### TEACHER AND ADMINISTRATOR CHARACTERISTICS

Staff Type by Ethnicity**										
Staff Type	White, Non-Hisp.		Black, Non-Hisp.		Hispanic		Other		Total	
	Ct	%	Ct	%	Ct	%	Ct	%		
Administrators	1	50.0%	1	50.0%	0	0.0%	0	0.0%	2	
Instructional Staff	22	71.0%	7	22.6%	2	6.5%	0	0.0%	31	
Instructional Support	4	80.0%	1	20.0%	0	0.0%	0	0.0%	5	
Non-Instruct. Support	7	50.0%	3	21.4%	2	14.3%	2	0.0%	14	

### Instructional Staff Degree Held\*\*

Level of Education	Ct	%	Total
Bachelors	26	66.7%	39
Masters	11	28.2%	
Specialist	2	5.1%	
Doctorate	0	0.0%	

### PROGRAMS & ELECTIVES

School of the Arts

Enrichment classes in music, dance, theatre, visual, and culinary arts • Sanford Harmony SEL program • STEAM learning • Basketball • Piano/ Group keyboarding instruction • Percussion Opportunities • National Junior Honor Society

For more information on this school, click here:

[English](#)

[Spanish](#)

### TRANSPORTATION

School bus service provided for all students living within their home school zone outside of a 2 mile distance (w/in 2 mile if deemed hazardous walking conditions). Students attending their school of CHOICE will be provided a depot stop location which is not guaranteed to be within walking distance; which may require parent's assistance. Parents of K and 1st grade students are required to provide supervision at bus/depot stop locations during AM pickup and PM drop-off.

\*\*Data as of November 2020