



School District of Indian River County

Sebastian Elementary School

400 County Road #512, Sebastian, FL 32958

<https://ses.indianriverschools.org/>

2021-2022 School Profile

Principal: Whitfield, Letitia

Principal Email: letitia.whitfield@indianriverschools.org

Phone: 772-978-8200

ENROLLMENT

Student Enrollment by Grade and Ethnicity**									
GD	White		Black		Hispanic		Other		Total
	Ct	%	Ct	%	Ct	%	Ct	%	
KG	37	54.4%	20	29.4%	7	10.3%	4	5.9%	68
1	29	63.0%	13	28.3%	3	6.5%	1	2.2%	46
2	35	60.3%	18	31.0%	5	8.6%	0	0.0%	58
3	23	46.0%	16	32.0%	6	12.0%	5	10.0%	50
4	24	49.0%	12	24.5%	8	16.3%	5	10.2%	49
5	43	55.1%	26	33.3%	6	7.7%	3	3.8%	78

Exceptional Student Program Information**

Program	Number with Exceptionality
Exceptional Students	78
Gifted (* = <10)	6
Total	84

21-22 ESE Students' Least Restrictive Environment**

78.4%

English Language Learners**

Count	Percent
6	1.7%

ACADEMIC PERFORMANCE

School Grade**	
2018-2019	2020-2021*
C	NA

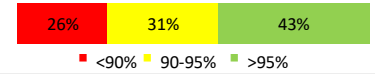
Measures of School Grade				
Component	18-19	20-21	Change	
ELA	Achievement	53	44	↓
	LG All	57	37	↓
	LG Low 25%	49	36	↓
Math	Achievement	58	40	↓
	LG All	55	22	↓
	LG Low 25%	49	17	↓
Science Achievement	53	25	↓	

*Per FLDOE, due to the COVID-19 pandemic, school grades were not calculated for the 19-20 school year. Additionally, for 20-21, this school did not opt in for School Grades.

SCHOOL CULTURE

20-21 Climate Survey			
School Rating out of 5 (Strongly Agree)			
Subject	Parent	Staff	Student
Success	4.71	4.56	4.73
Safety	4.81	4.43	4.60
Climate	4.65	4.45	NA

Student Attendance**			
% of students with an ADA below 90%, between 90-95% and above 95%.			
ADA	<90%	90-95%	>95%
% of Stud	26%	31%	43%



Average Daily Attendance**	
Students	92.2%

TEACHER AND ADMINISTRATOR CHARACTERISTICS

Staff Type	White, Non-Hisp.		Black, Non-Hisp.		Hispanic		Other		Total
	Ct	%	Ct	%	Ct	%	Ct	%	
Administrators	1	50.0%	1	50.0%	0	0.0%	0	0.0%	2
Instructional Staff	26	83.9%	5	16.1%	0	0.0%	0	0.0%	31
Instructional Support	4	80.0%	0	0.0%	0	0.0%	1	0.0%	5
Non-Instruct. Support	4	44.4%	4	44.4%	1	11.1%	0	0.0%	9

Instructional Staff Degree Held**			
Level of Education	Ct	%	Total
Bachelors	22	62.9%	35
Masters	10	28.6%	
Specialist	3	8.6%	
Doctorate	0	0.0%	

ABOUT THE SCHOOL

At Sebastian Elementary School of the Arts, the ARTS are a vehicle to student success in a creative, safe, and engaging learning environment. Our staff works collaboratively to channel students' unique skills and talents through an integrated academic and arts program. We celebrate our diverse staff and student population while striving to live up to our vision "Nurturing and Educating Student for Tomorrow Through the Arts".

For more information on this school, click here:

[English](#)

[Spanish](#)

TRANSPORTATION

School bus service provided for all students living within their home school zone outside of a 2 mile distance (w/in 2 mile if deemed hazardous walking conditions). Students attending their school of CHOICE will be provided a depot stop location which is not guaranteed to be within walking distance; which may require parent's assistance. Parents of K and 1st grade students are required to provide supervision at bus/depot stop locations during AM pickup and PM drop-off.

**Data as of October 2021